

St Andrew Presbyterian Church

LOAVES + FISHES

December 2023



Vision

Mission

CHRIST IS CALLING ST. ANDREW PRESBYTERIAN CHURCH TO BE A BEACON OF PEACE AND LOVE WHERE EVERYBODY BELONGS

AS FOLLOWERS OF JESUS CHRIST, WE ARE BEING TRANSFORMED THROUGH THE COURAGEOUS AND HEALING WORK OF RECONCILIATION

In This Issue

Calendar.....	2
Want-Ads.....	3
Pray-Ground.....	4
PNC.....	5
Discipleship.....	5
Property Management.....	6
Security Task Force.....	6
Mission.....	7-8
Fellowship.....	9
Youth/Children.....	10
Deacons, Finance, Session ..	11
NLC.....	12
Small Groups.....	13



Christmas Poinsettias

If you would like to provide poinsettias for our Christmas Eve service, please sign up ASAP on the clipboard in the narthex.

The poinsettias are yours to take home after the 7:00 pm Christmas Eve service.

There will be 30 red or 5 white to choose from and are \$15.00 per plant. You can make an inline donation and note "Poinsettias" in the memo line. Or, make a check payable to St. Andrew with "Poinsettias" in the notation line. Checks can be placed in the offering plate or mailed to:

St Andrew Presbyterian Church
711 West Main Street, Purcellville, VA 20132.

If you have any questions, please contact Nancy G. at nancy.gilmore@standrew-pres.org



We are partnering with LAWS again this Christmas season to provide store gift cards for families dealing with domestic abuse. Once again look for the LAWS Gift Tree in the narthex or entryway. Take a tag as a reminder for when you are doing your holiday shopping. The gift cards let parents purchase presents for their children. They know best what they need and what they want. We will collect gift cards for Walmart, Target, Giant, and Amazon. **Please return gift cards to the church by December 15** so that parents will have time to shop for their children.

LAWS provides a full array of services to adult, youth and child victims of domestic and sexual violence. They provide emergency shelter, but also therapy, legal services, support groups and advocacy. The St. Andrew Mission Committee has helped support the LAWS mission for many years. For more information you can go to www.lcsj.org



December Calendar

Sat 2	7:30p	Book Club
Sun 3	9-9:45a	Sunday School
	10a	Worship service with Communion
	11a	Joining Deacon & Session meeting
Weds 6	6p	A Service for the Weary, with supper
	7/8p	Choir/Handbell practice
Sun 10	9-9:45a	Sunday school
	10a	Worship service
	11a	Committee meetings after service*
Weds 8	6:30p/8p	Choir/Handbell practice
Thurs 14	4:30p	NLC Christmas program
	6:30p	PNC meeting
Sun 17	9-9:45a	Sunday school
	10a	Worship service
Weds 20	all day	NLC Polar Express Day
	6:30p/8p	Choir/Handbell practice
Thurs 21	6:30p	PNC & NLC Board meetings
Fri 22	all day	NLC closed
Sun 24	9-9:45a	Pageant practice and prep
	10a	Worship service w/ Christmas Pageant
	11a	Birthday Party for Jesus
	7p	Candlelight service
Mon 25	all day	Church office & NLC closed
Tues 26	all day	Church office closed
Tues 26 -	Weds 3	Rev Bev out of town
Sun 31	10a	Worship Service



**child care is available infant-3 years old*



Save
The
Date

Annual Meeting
January 28, 2024

Volunteers needed

FLOWERS FOR WORSHIP

Consider signing up to provide flowers for a worship service! Flowers can be store bought, delivered by a florist, or picked from your own garden. Sign up on the flower chart in the Narthex, or email nancy.gilmore@standrew-pres.org.

HOST A COFFEE HOUR

Please sign up to provide Coffee/Fellowship Hour snacks and coffee! See the Fellowship bulletin board near the kitchen to choose a week.

fellowship@standrew-pres.org

ADULT STUDY LEADERS

Leaders for the Sunday morning Bible Study are needed. We provide everything you need! discipleship@standrew-pres.org

YOUTH GROUP

Click to sign up and feed these hungry kids!

- [Donuts for Sunday morning Bible Study](#)
- [Youth Group Dinners](#)
- [Youth Group Parent Volunteers](#)

clark.seipt@standrew-pres.org

CHILDREN'S LESSONS

A few more adults are needed to help lead Sunday children's lessons from 9:00-9:45. Sign up to help one Sunday and see how you like it, and then think about committing for a monthly rotation! sarah.sassak@standrew-pres.org

MEAL TRAIN MEMBERS

Be a member of the Congregational Care Meal Train Team! This group is on-call when someone in the congregation needs meals to help them through a challenging time.

deacons@standrew-pres.org

DOCUMENT SCANNING

Discipleship & Children's Ministry need someone to scan some documents from physical handouts to electronic format.

kirsten.shields@standrew-pres.org or

ally.fetch@standrew-pres.org

SUNDAY GREETERS

Can you smile? You can greet! From 9:30 - 10:05 am you greet church visitors and hand out bulletins. deacons@standrew-pres.org

WEBSITE REDESIGN

Do you have a marketing background? You are perfect to help generate ideas for redesigning our website!

deborah.hill@standrew-pres.org



Jesus said in Matthew 19:14, "Let the little children come to me, and do not hinder them, for the kingdom of heaven belongs to such as these."

PRAY-GROUND

NOW OPEN AFTER THE CHILDREN'S MESSAGE EVERY WEEK!

WHAT IS A PRAY-GROUND?

During the normal worship service, there will be a designated space near the front of the sanctuary where young children can experience worship through age-appropriate worship materials that will help keep them engaged in what is happening – such as children's Bibles and books, coloring/drawing materials, pipe cleaners, Play-Doh, and items related to the scripture theme such as smooth stones, feathers, shells, etc.

WHY A PRAY-GROUND?

- Children acquire the "language" of worship by listening to and observing the words of the adults around them.
- Children are better able to process what they hear when they have something to do with their hands.
- Children love rituals and repetition.

We ask that an adult (or older youth) accompany their child and sit in the pews alongside the Pray-Ground to make sure their child understands the expectations of the space:

- use whisper voices
- be kind to others
- stay in the space once there
- be excited to be part of the worship of God in THEIR church!



Dear Santa,

We have tried very hard to be good his year. We know we have been late with this newsletter sometimes, but we promise we're really trying. Please bring us some more helpful feedback, committee/group updates we can just cut & paste into our drafts, and the peace of Christ for all of St Andrew.

Thank you!

Love,

Atty & Deborah

Submissions due
Friday, December 22
[newsletter@
standrew-pres.org](mailto:newsletter@standrew-pres.org)

Pastor Nominating Committee (PNC)

Your PNC has been hard at work for months creating the very specific “want ad” required to advertise for a new pastor. Now you can follow the progress of the rest of the process via our new “PNC Candles!”

There are three electric candles placed in the Narthex and Fellowship Hall, and the color of the candles tell you where we are in the process:

A blue light shows that your PNC is reviewing applications.

If you see green, interviews have begun.

Yellow means that background and reference checks are in progress.

If the light is orange, your PNC is visiting prospective pastors.

Once you see red, the preliminary decision has been made.

And finally, constantly changing colors means the Terms of Call are being negotiated!



Co-Chairs: Evan Read & Leslie Dragon

PNC Members: Amber Gillispie, Deborah Hill, Kirsten Shields, Maria Burel, and Marie Cahoon

To contact any PNC member:

first name.lastname@standrew-pres.org

There is a private Facebook group called "St. Andrew Presbyterian Church Families" where TONS of photos and info and fun stuff is shared! Request to join!

Discipleship

discipleship@standrew-pres.org



Sunday morning Adult Study has combined into a single group so we can all learn and share together! We are using the Follow Me curriculum, and each month has a different focus.

December is Hope. Here is a sample from the curriculum's foundational essay:

"When chaos imposes fear on our unsuspecting lives, it is hope that pulls us up and guides us forward. And in those helpless seasons when we find there is nothing left within ourselves to rely on, we encounter the depth and fortitude of 'hoping against hope'. (Romans 4:18)"

Please join us from 9:00-9:45 Sunday mornings as we dive into Scripture and learn from God's word and from one another. **All are welcome, and each Sunday is a standalone lesson, so no worries if you haven't been able to attend before!**

NOTE: No class Christmas Eve or New Year's Eve.

Property Management & The Security Task Force

Happy holidays!

Hopefully by now everyone has seen the beautiful Christmas decorations that have been put up around the church!

Thank you to everyone that helped with the greening of the church and with our November workday! Without your help, we couldn't have prepared for the holiday! Our workday was a great success and helped address many of the "little projects" that we wanted to accomplish. We continue to address some of the larger issues and maintenance items that have been on the "back burner" this year.

The biggest upcoming change is the installation of a new door access system that will replace the existing keypad on the main entry door. We will be replacing that system with a "swipe" system that uses keycards or small key FOBs to unlock the door electronically. This will provide a much higher level of security for our facility as we move into the new year. We also hope to complete the installation of security camera and other security upgrades that have been recommended.

In the new year the property committee will be addressing some larger maintenance items including the replacement of the kitchen stove, the beginning of an HVAC refurbishment program, repairing the exterior railings in front of the church, removal of several problem trees on the property, improving exterior lighting in front of the church, and refreshing paint in some areas of the building. We are also beginning to assess other possible major renovations to the sanctuary including carpet replacement, improvement to audio/visual/streaming equipment, and refurbishment of the church pews where they have faded from UV damage. All of these projects are conducted by our volunteers with the hope of serving our congregation to provide a warm, welcoming, and safe space through which we can worship together and grow our relationships as well as serve the mission of the NLC and St Andrew.

We are always open to adding additional volunteers to help oversee/project manage some of these items. If you are willing to help out in any way, whether that be replacing a light bulb, maintain our IT infrastructure, or helping coordinate with external vendors (or anything in between), please contact either group at the addresses below.

property@standrew-pres.org

securitytaskgroup@standrew-pres.org

Mission

Thank you to the St. Andrew congregation, Scout Troops, and members of the community who came out and volunteered for a wonderful morning of packing meals for this great cause!



FOOD ON THE 4TH (SUNDAY): 12/24



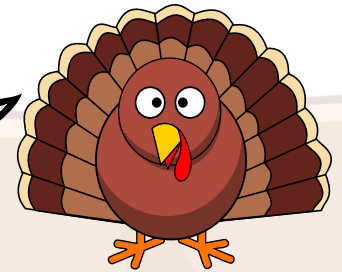
Meals you packaged are headed to Somalia!

Somaliland is a breakaway territory in northwestern Somalia that has secured peace and stability since declaring independence in 1991. Despite recovery from a 2011 famine, recurring drought conditions have resulted in large crop failures and reduced availability of water for people and livestock, creating threats to food security. The Global Hunger Index, which assesses food insecurity based on indicators that measure undernourishment and undernutrition, categorizes Somaliland as having an "alarming" level of hunger.

YOUR IMPACT:

Through **Rise Against Hunger's** Responding to Emergencies Pathway, to address threats to food and nutrition security in times of crisis, we collaborate with organizations that are meeting the immediate needs of families and communities in this Somaliland. The meals you packaged can help serve internally displaced people, refugees, and communities facing the loss of access to resources that support their livelihoods. You're helping meet the nutritional needs of these communities at a critical moment. Read more about the impact meals like yours can make in emergency situations by [checking out our Pathways to End Hunger!](#)

A total of 55 Thanksgiving dinner bags and 50 gift cards were delivered to Loudoun Hunger Relief!



Together with the **Community Coalition of Haiti** partner schools we have become a Student Sponsor. An online gift of \$360.00 from the Mission committee will help provide tuition support, teacher training, books & supplies, a nutritious meal every school day, health lessons, and access to healthcare screenings during the school year.

There will be more "on the ground" updates throughout the year. You can follow on Facebook (www.facebook.com/cchaiti) to see current photos and stories and help share the impact of our education mission with your friends online.

mission@standrew-pres.org



St Andrew Alternative Gift Market

For many years, we at St. Andrew Presbyterian have had our own gift shop where we could give a donation to a local, national, or international charity and receive a gift card in recognition of the donation. We could then give that card to a family member, a friend, a favorite teacher, etc. to let them know that we are thinking about them and recognizing their interest in helping the world be a better place for all of us. You don't need the church to be your "shopping assistant" anymore. Below are some organizations to which you might want to consider giving along with their contact information.

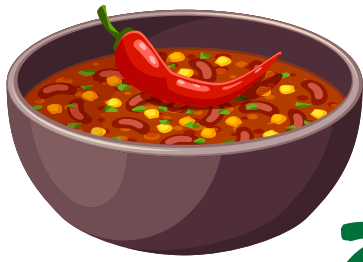
HEIFER INTERNATIONAL has always been one of the most popular opportunities in our Alternative Gift Market both because of their mission and because of their creative gift cards. Heifer follows the philosophy that if you give a man a fish he will eat for a day but if you teach him to fish he will eat the rest of his life. Heifer actually goes one step further though. They not only give those in need the means to provide for themselves, they also require that the recipient passes the same benefit on to others in the community. You can give, virtually, anything from a flock of chickens, to a basket of yarn, to a share of a goat, or the means to have clean water. Heifer will provide a gift card for you to give or will send out a card or email to the person you indicate. www.heifer.org/catalog

COMMUNITY COALITION FOR HAITI is working to provide an in-community solution to healthcare, sanitation, and education systems. It is staffed by locals and supported by many volunteers. CCH provides primary care, rehab, and surgical clinics staffed by Haitian doctors. They are partnering with schools in Haiti to assist with teacher development, child nutrition, and even repairing and replacing school buildings. They are working within the rural communities to help develop food and income sources. Your donation could provide books, food, health checkups, medicine, summer camp and more. www.cchaiti.org

PRESBYTERIAN DISASTER ASSISTANCE (PDA), whose motto is "Out of Chaos, Hope," is working in disaster sites throughout the US and internationally. In addition, they have an active ministry working with refugees and asylum seekers. PDA is one of the first organizations on site when a disaster strikes and also one of the last to leave, providing both immediate assistance and long term resettlement help. You can designate a specific disaster or site where you want your gift to go or you can indicate that it should go where most needed. PDA will provide a gift card for you to give. www.pda.pcusa.org

LOUDOUN LITERACY COUNCIL works with at risk children to develop their reading skills and to provide books, works with families in a variety of ways (and sites) to encourage family reading time, and works with adults to help them gain needed literacy for job seeking, complete the GED requirements, and gain functional English skills particularly for non-native speakers. www.loudounliteracy.org

LOUDOUN HABITAT FOR HUMANITY, which is affiliated with Habitat for Humanity International, is working to provide affordable housing within Loudoun County. To date they have built 65 homes in our County and sold them to qualifying families at affordable rates with interest-free mortgages. In addition, they have repaired 37 homes to allow people to stay in their home. Your donation could provide materials for building or instruction time for the required courses the new homeowners complete in budgeting, home ownership, etc. Loudoun Habitat can provide a gift card for you to pass on. www.loudounhabitat.org



Fellowship

2023 CHILI COOKOFF



Competition was SPICY at this year's competition! Thank you to all who brought an entry, baked cornbread, made dessert, and to all who helped organize.

1st Place: Olivia B., 2nd Place: Kirsten S., 3rd Place: Chris B, Peoples' Choice: Amber G.

Thanks to Judges Casey B., Daniel G., and Randy D. for tasting all that chili!

Here's a link to [Olivia's award winning chili recipe!](#)



Youth

clark.seipt@standrew-pres.org



SUNDAY MORNING YOUTH STUDY 9AM

Come join us and learn about the Bible and what it means to live a Christian life as a teen/tween in today's world. Oh, and did we mention...



Children

SUNDAY CHILDREN'S SCHOOL - 9:00 AM

Come join your friends and learn about Following Jesus! Children ages 4 through 5th grade are invited every Sunday morning to hear Bible stories, do crafts, play games, and of course...have FUN!!

sarah.sassak@standrew-pres.org

**THE CHRISTMAS
PAGEANT**

**DECEMBER 24TH
10:00AM**

**REHEARSALS DURING
CHILDREN'S CHURCH!**



Deacons

deacons@standrew-pres.org

St. Andrew's deacons are charged with caring for our church community. Please reach out if you or someone you know needs meals, help with errands, rides, or simply prayers.



YOUR DEACONS ARE

- Evan Read
- Katie Dunnigan
- Katie Schwieger
- Kim Peele
- Mitch Seipt
- Pat Quinn
- Robin Layboourne
- Marie Cahoon (Co-Chair)
- Sarah Sassak (Co-Chair)



The Service for the Weary,
also known as a
Blue Christmas Service,
will be Wednesday, December 6.
The Deacons will have a small dinner
before at 6PM.



What do we mean by "Blue Christmas"?

A Blue Christmas Service is a Western Christian tradition that happens on or around the longest night of the year.

It is about comforting fellow Christians who are grieving and struggling to find joy and hope during this traditionally festive season. Such a "Service for the Weary" also expresses the belief that no matter what happens to us, God will be there to comfort and support us.

Session

Ruling Elders, together with ministers of word and sacrament, exercise leadership, government, spiritual discernment, and discipline and have responsibilities for the life of a congregation as well as the whole church, including ecumenical relationships.

Your Elders are:

Ally Fetch, Discipleship; Clark Seipt, Youth (part of Discipleship); Daniel Gillispie, Finance; Deborah Hill, Communications; Josh Shields, Property; Lillian Brewer, Worship; Marcia Owens, Clerk of Session; Priscilla O'Donnell, HR; Stephen Fike, Treasurer

session@standrew-pres.org

Finance

Year-To-Date (YTD) through
Nov2023

Budgeted income:	\$520,168.00
Actual total income:	<u>\$482,351.48</u> (\$37,816.52)
Budgeted expenses:	\$527,998.31
Actual Expenses:	<u>\$487,617.12</u> \$40,381.19
Net income:	\$2,564.67

Full financial reports are available on the bulletin board in the Fellowship Hall.

finance@standrew-pres.org **11**

The Neighborhood Learning Center

The NLC Thanksgiving Family Feast never disappoints! The families of our age 2 through pre-K classrooms joined their children for this annual event. Rev Bev started everyone off with a children's message and prayers of gratitude in a packed sanctuary. Then everyone proceeded to the beautifully decorated Fellowship Hall, where all staff were on hand to serve the children and their families a delicious turkey dinner, complete with homemade pumpkin bread (thanks to Chef Nicole).



SPREAD THE WORD!

There is room at our inn this Christmas season!

The infant classroom at the NLC has spaces for immediate enrollment.

Refer anyone who is interested to JoAnna at joanna.rich@tnlcenter.com



THIS MONTH AT THE NLC

Thur Dec 14:

Christmas Program at 4:30pm, reception to follow

Fri Dec 15:

Staff Cookie Exchange - **DONATIONS NEEDED!**

[Click here to sign up!](#)

Weds Dec 20:

Santa visits from 9am-noon

Thur Dec 21: LCPS closed, NLC open for a Drop-In Day

Fri Dec 22 & Mon Dec 25: NLC CLOSED

Tues Dec 26: PJ Day!

Tues Dec 26 - Fri Dec 29: School Age Winter Camp

Mon Jan 1: NLC CLOSED





Small Groups

4TH SATURDAYS
7:30 PM @
MEMBERS' HOMES



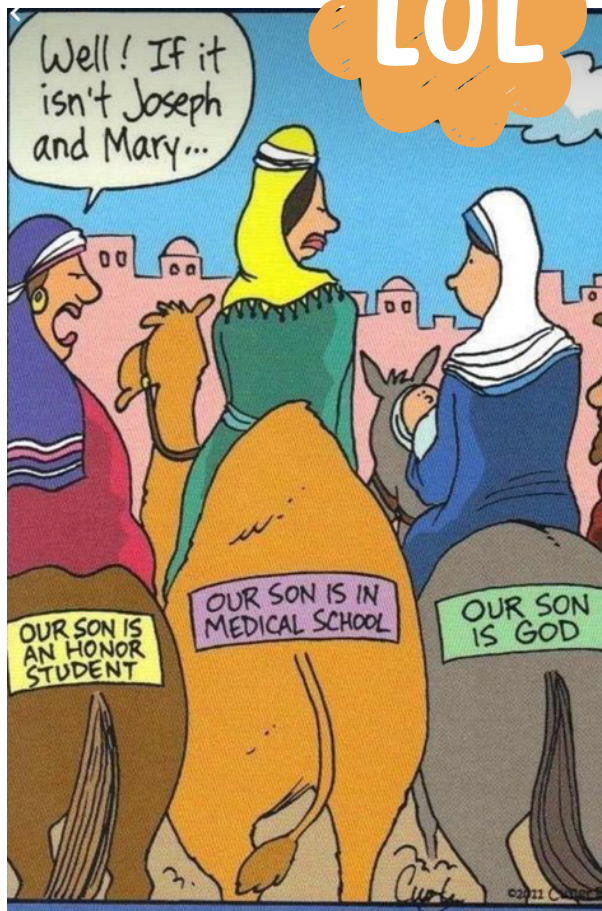
nancy.gilmore@standrew-pres.org

This book club has been meeting for over 20 years! At each meeting there is an assigned book for a discussion led by volunteers. Meetings rotate among members' homes. For more information, text or call Zoe Sowers at 703-629-4964.

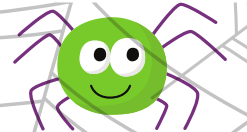
Jan 27 The Covenant of Water
by Abraham Verghese

bookclub@standrew-pres.org

The Bible Bunch meets the 2nd Monday of every month at 10:00 am in the Youth Lounge. They are following the Presbyterian study, "Sacred Encounters: The Power and Presence of Jesus Christ in Luke-Acts" by Olive Mahabir. Within the pages of this study, Olive Mahabir invites you to consider Jesus and Jesus' disciples who shared the Good News through sacred encounters with everyday people.



Did you know?



In many Eastern European countries, particularly in Ukraine, finding a spider or a spider's web in your Christmas tree is a symbol of good luck! This is because these countries have the legend of the Christmas spider, which tells of a poor widow who lived in a small hut with her children. One spring the widow found a pinecone, and they all cared for it diligently until it became a pretty tree. Unfortunately, they couldn't afford to decorate the tree for Christmas. Upon waking up on Christmas Day, they found the tree covered in elegant spider webs that shone gold and silver in the sunlight. After that, the widow and her children never lived in poverty again!